

Copyright

The interpretation right of this product specification belongs to BOE MLED. Without the signed permission of BOE MLED, any other individual or organization is not allowed, in any form, to excerpt, reproduce, copy, translate, edit or publish this product specification. This product specification is subject to modification without prior notice.



SPEC. NUMBER

-

Product Group

MLED

REV.

-

Release Date

2024.05.24

Page

1

Product Specification

BYH-B012Q3

Rev. 1

BOE MLED Technology Co., Ltd.

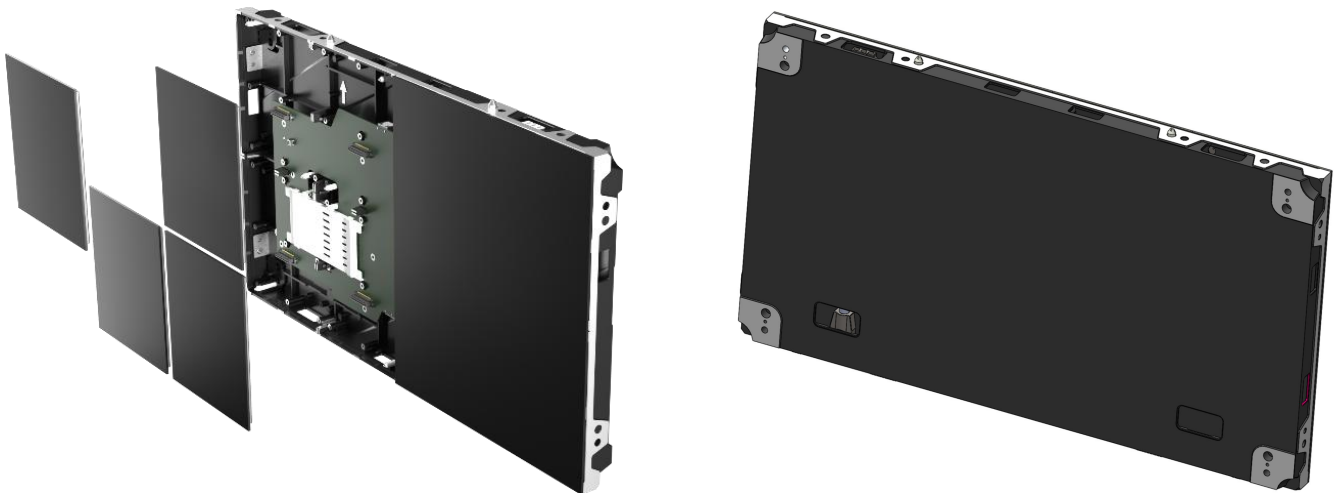
1. Product Description

- 1.1 LED display on the front of each pixel is composed of R,G,B flip chip, each chip is fixed to the printed circuit board separately;
- 1.2 The back of the LED display module is assembled with components such as ICs and resistors and capacitors, which can be connected to control system to display video, image and text, etc;
- 1.3 LED display module is designed for pre-maintenance, supporting professional suction cup tools to complete the installation and commissioning.

2. Features

- 2.1 High reliability full flip COB integrated package;
- 2.2 Constant-current driver chip for uniform light emission and low power consumption;
- 2.3 High contrast ratio to meet a better display;
- 2.4 Light weight, easy to install and dismantle;
- 2.5 The module design divides into two unit: display kit, display module.

3. Product Image



SPEC. NUMBER
-

Product Group
MLED

REV.
-

Release Date
2024.05.24

Page
3

4. Main Technical Parameters

Characteristics	Minimum	Typical	Maximum	Remark
Pixel Pitch (mm)	1.25			Common Anode
Resolution (W×H)	480×270			
Cabinet Size (mm)	600×337.5×35			W×H×D, include Module
Cabinet Weight (kg)	-	-	4.6	Include Module
Cabinet Flatness (mm)	-	-	0.15	
Brightness (cd/m²)	-	600	800	0~800cd/m²
Color Coordinates (CIE 1931)	-	Cx=0.285 Cy=0.300	-	Adjustable, tolerance 30.003
Color Temperature (K)	-	9,000	-	3,000~10,000K
NTSC Color Gamut (CIE 1931)	105%	-	-	According to Q/HCP 001-2020
Viewing Angle (°,H/V)	-	165/165	-	
Brightness & Color Uniformity	97%	-	-	
Maximum Power (W/m²)	-	330	-	35%
Average Power (W/m²)	-	110	-	
Contrast Ratio	5,000:1			Ambient light level of 10 Lux (Matte)
scanning number	60			
Frame Rate (Hz)	60			
Parametric Gray Scale	13bit			
Refresh Frequency(Hz)	1920~3840			
IP Rating	IP65			Brightness Surface
Point-By-Point Calibration	Support			
Module Flash	Support			

Copyright

The interpretation right of this product specification belongs to BOE MLED. Without the signed permission of BOE MLED, any other individual or organization is not allowed, in any form, to excerpt, reproduce, copy, translate, edit or publish this product specification. This product specification is subject to modification without prior notice.



SPEC. NUMBER
-

Product Group
MLED

REV.
-

Release Date
2024.05.24

Page
4

5. Plane Structure of the Product

