

Copyright

The interpretation right of this product specification belongs to BOE MLED. Without the signed permission of BOE MLED, any other individual or organization is not allowed, in any form, to excerpt, reproduce, copy, translate, edit or publish this product specification. This product specification is subject to modification without prior notice.



SPEC. NUMBER

-

Product Organization

MLED

REV.

O

Date of issue
2023.01.11

Page

1

BYH-009Q

Product Specification

Rev. O

BOE MLED Technology Co., Ltd.

Copyright

The interpretation right of this product specification belongs to BOE MLED. Without the signed permission of BOE MLED, any other individual or organization is not allowed, in any form, to excerpt, reproduce, copy, translate, edit or publish this product specification. This product specification is subject to modification without prior notice.

BOE

SPEC. NUMBER

-

Product Organization

MLED

REV.

O

Date of issue
2023.01.11

Page

2

1. Product description

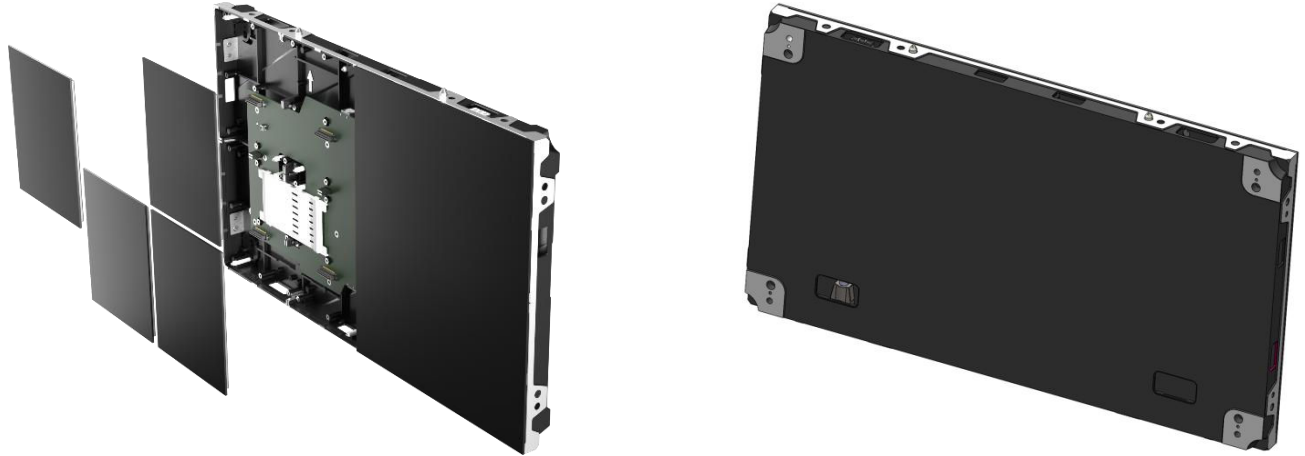
1.1 Product introduction

- Display every pixel on the module unit module, using full flip R, G, B chip package, each chip is fixed on the substrate;
- Modular structure design, simple connection, light weight, more convenient installation and disassembly;
- The display unit of the box body is a pre-maintenance magnetic suction structure, which is equipped with professional magnetic suction tools to complete installation and maintenance.

1.2 Product features

- Full flip chips package;
- Driven by cross flow,excellent luminous uniformity,low power consumption;
- High contrast;
- Light weight,easy to install and disassemble;
- Modular structure design.

1.3 Product pictures



2. Product technical parameters

Category	Product parameters	Remark
Product Model	C2-D0907	JC-0.9
Pixel composition	1R1G1B	Full flip chips

Category	Minimum	Typical	Maximum	Remark
Pitch(mm)	0.9375			common cathode
Resolution(W×H)	640×360			
Size(mm)	600×337.5×35			W×H×D Included display module
Weight(kg)	-	-	4.6	Included display module
Flatness(mm)	-	-	0.15	
Brightness(cd/m²)	-	600	1000	0~1000cd/m² Adjustable

Copyright

The interpretation right of this product specification belongs to BOE MLED. Without the signed permission of BOE MLED, any other individual or organization is not allowed, in any form, to excerpt, reproduce, copy, translate, edit or publish this product specification. This product specification is subject to modification without prior notice.

BOE

SPEC. NUMBER

-

Product Organization

MLED

REV.

O

Date of issue

2023.01.11

Page

3

Color coordinates (CIE 1931)	-	Cx = 0.285 Cy = 0.300	-	Adjustable;error ± 0.003
Color temperature(K)	-	9,000	-	3,000 ~ 10,000K Adjustable
Color gamut(CIE 1931)	105%NTSC	-	-	Q/HCP 001-2020
Brightness Angle of view ($^{\circ}$,H/V)	-	165/165	-	
Brightness uniformity	97%	-	-	
Power maximum(W/m ²)	-	380	-	$\pm 5\%$
Power average(W/m ²)	-	127	-	
Ambient light contrast	5000:1			10 lux light environment
Scan number	54			
Frame change frequency(Hz)	60			
Parametric gray scale(Bit)	13			
Refresh frequency(Hz)	1920 ~ 3840			
IP Protection grade	IP65			Customizable
Point-by-point correction technique	Support			
Flash storage function	Support			

3. Product plan structure drawing

